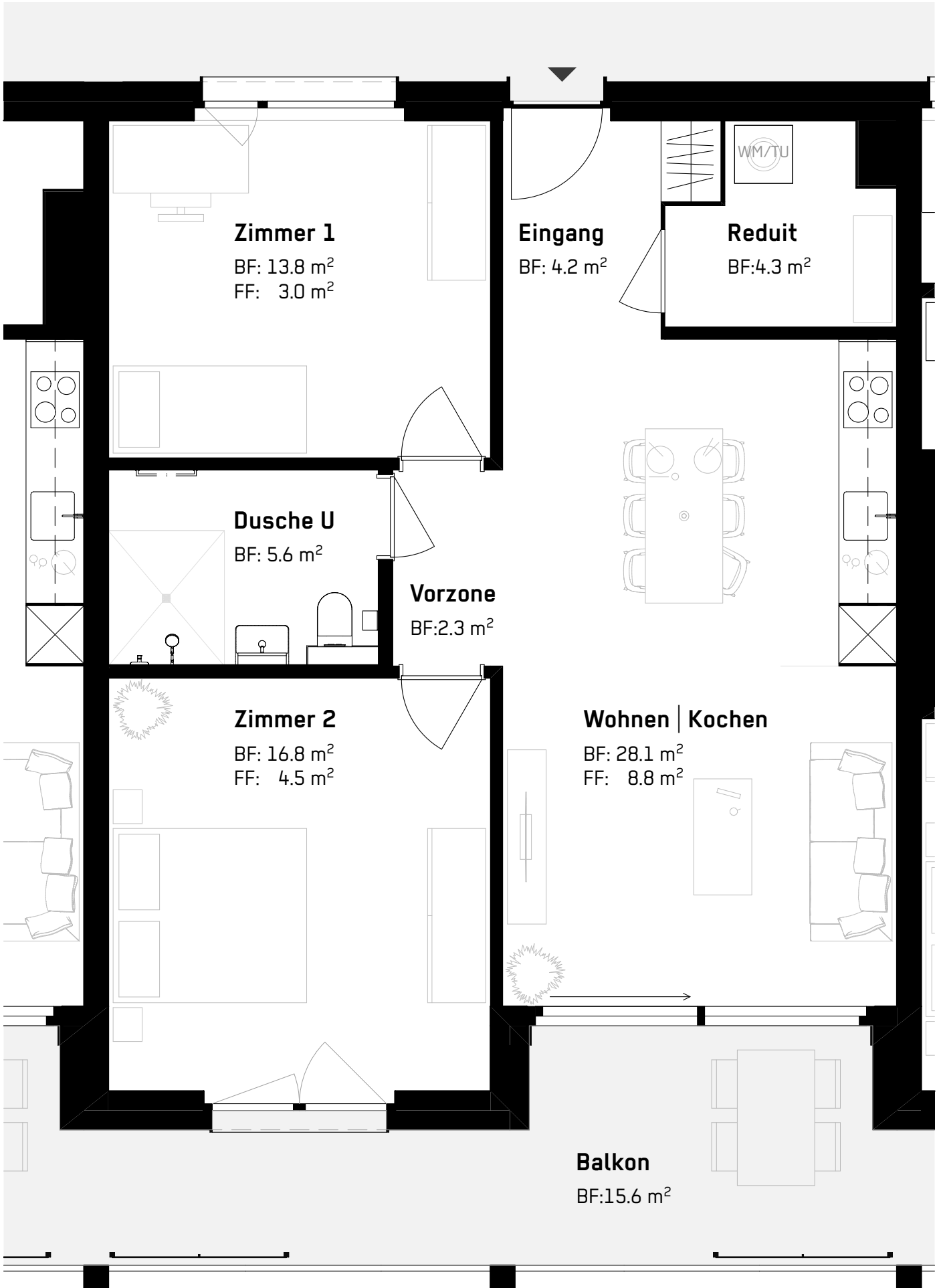




Gartenstrasse





3.5 Zi. WHG Haus B

1.OG: B 1.2 Etappe 1

B 1.2 Wohnen 3.5 Zi.	
Wohnräume	70.2 m ²
Nebenträume	4.6 m ²
SUMME	74.8 m²
Balkon	15.6 m ²
Keller	8.1 m ²

